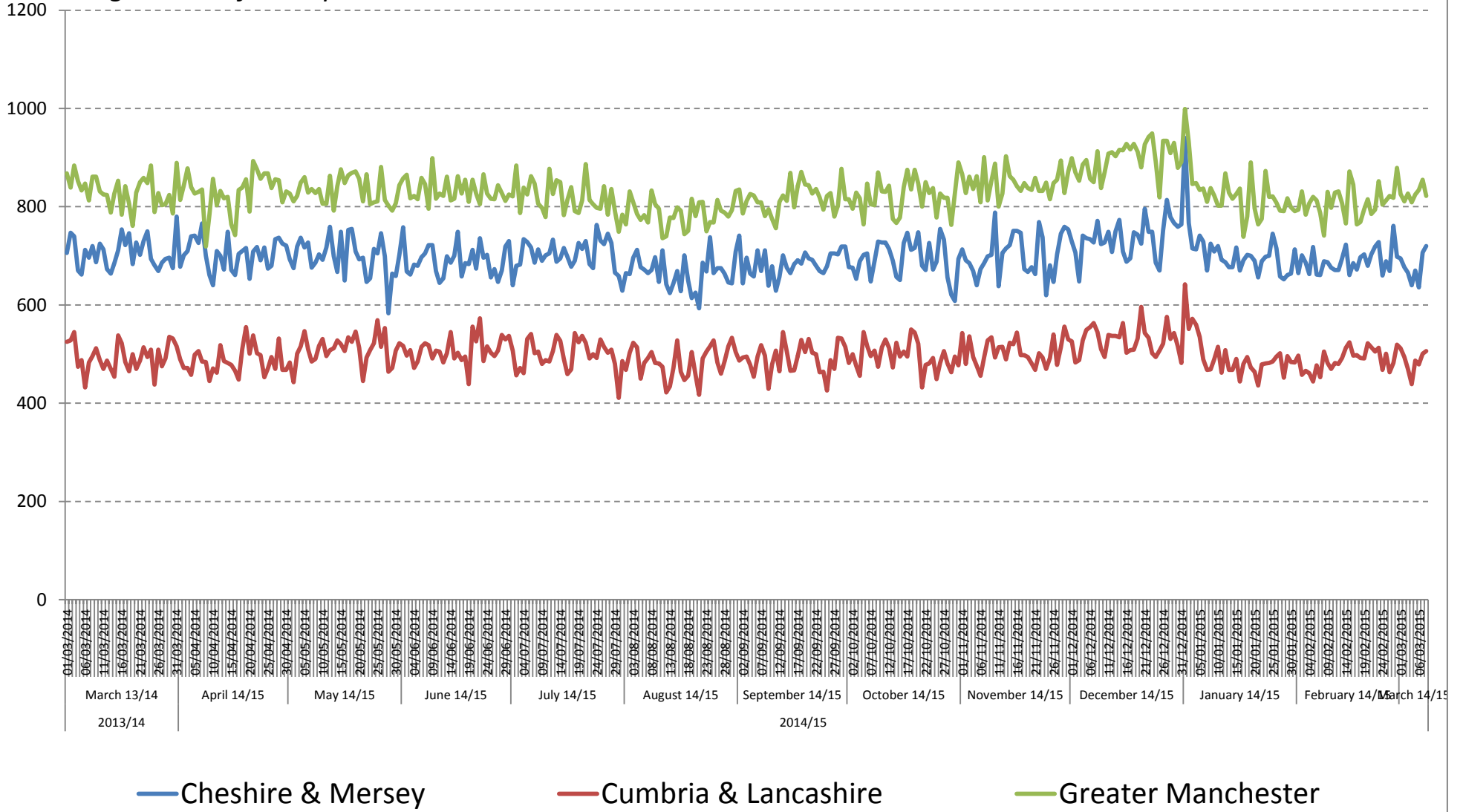


# Daily Attendances into A&E located within NWS Sub Regional Areas Regardless of Pickup Location

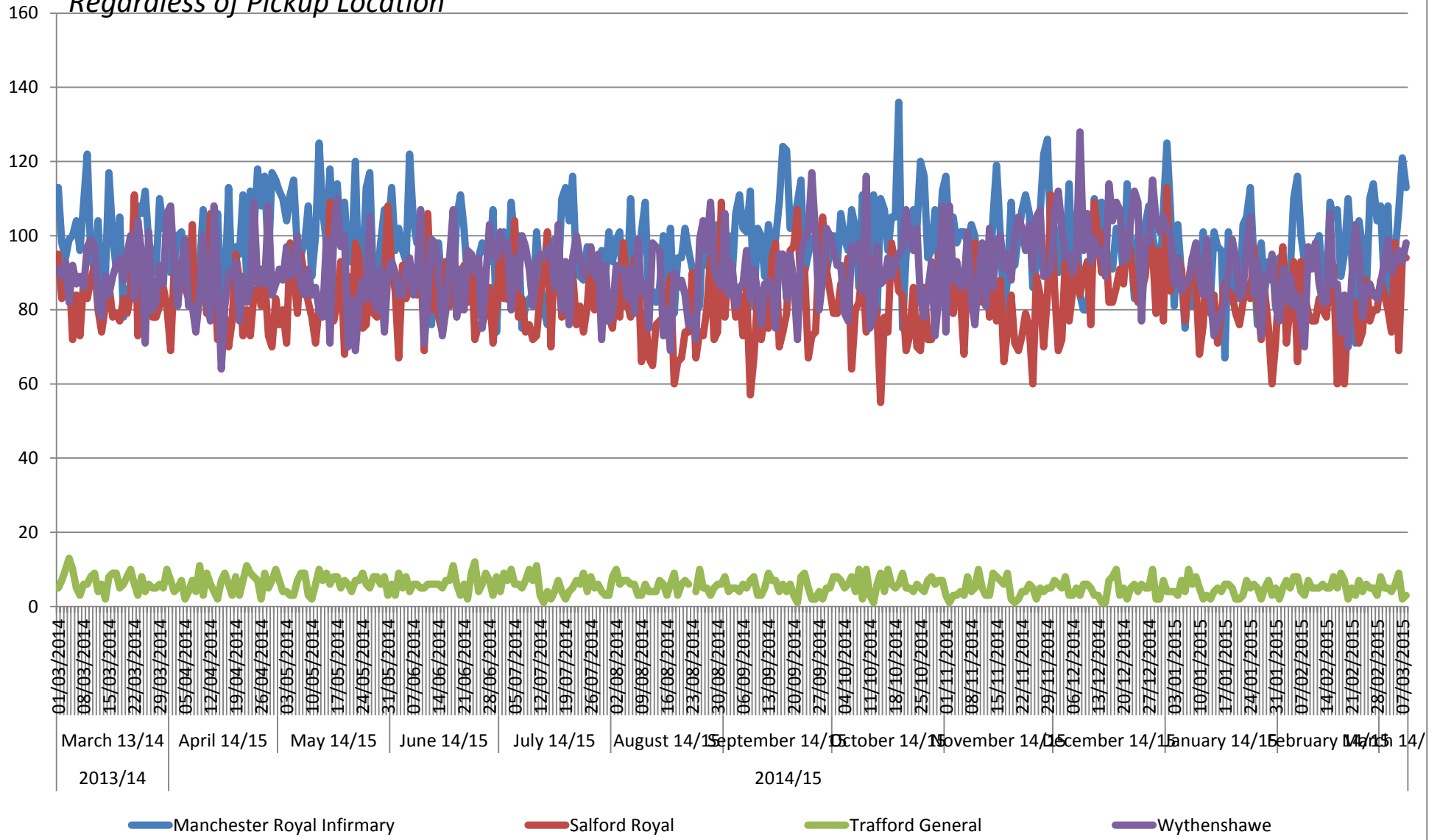
Source: NWS CAD  
Provisional pending QA



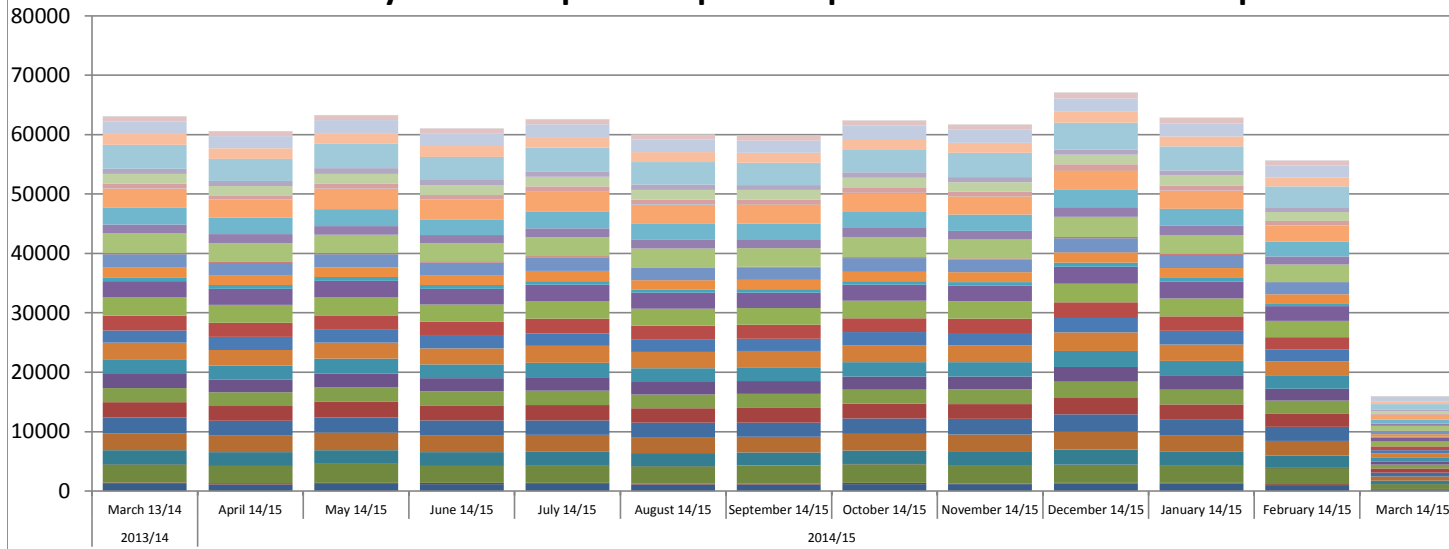
# Daily Attendances into Local A&E's

*Regardless of Pickup Location*

Source: NWAS CAD  
Provisional pending QA



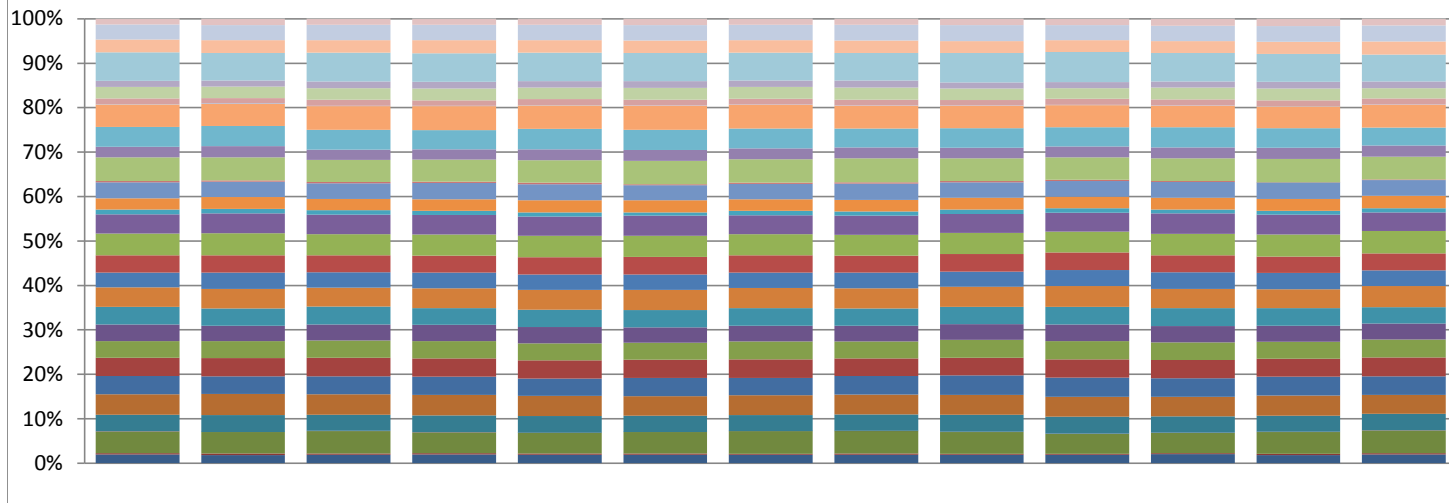
### A&E attendances by Acute for patients picked up within Trafford CCG footprint



Source: NWAS CAD  
Provisional pending QA

- Rochdale Infirmary
- Westmorelands General
- West Cumberland
- Royal Preston
- Royal Lancaster Infirmary
- Royal Blackburn
- Furness General
- Cumberland Infirmary
- Chorley and South Ribble District
- Burnley General Hospital
- Blackpool Victoria
- Wirral University Teaching Hospital
- Southport District General
- Royal Liverpool University
- Ormskirk and District General
- Leighton
- Countess of Chester
- Alder Hey
- Aintree University
- Whiston
- Royal Albert Edward Infirmary
- Fairfield General
- Wythenshawe
- Warrington
- Tameside General
- Stepping Hill
- Salford Royal
- Royal Oldham
- Royal Bolton
- North Manchester General
- Nearest Casualty
- Manchester Royal Infirmary
- Trafford General
- Macclesfield General

### 100 % STACKED CHART A&E attendances by Acute for patients picked up within Trafford CCG footprint



- Rochdale Infirmary
- Westmorelands General
- West Cumberland
- Royal Preston
- Royal Lancaster Infirmary
- Royal Blackburn
- Furness General
- Cumberland Infirmary
- Chorley and South Ribble District
- Burnley General Hospital
- Blackpool Victoria
- Wirral University Teaching Hospital
- Southport District General
- Royal Liverpool University
- Ormskirk and District General
- Leighton
- Countess of Chester
- Alder Hey
- Aintree University
- Whiston
- Royal Albert Edward Infirmary
- Fairfield General
- Wythenshawe
- Warrington
- Tameside General
- Stepping Hill
- Salford Royal
- Royal Oldham
- Royal Bolton

Clinic Type  
Hospitals by Area

A&E  
Vythenshaw  
\* Source: NWAS CAD  
\* Provisional pending  
QA

# Wythenshawe

Daily Attendances .  
Day of month  
Day of week

AE Hospital Attends

Column Labels  
2014/15  
February 14/15

March 14/15

Patient Pickup Location	9	10	11	12	13	14	15	16	17	18	19	20	21	22	23	24	25	26	27	28	1	2	3	4	5	6	7	8	
	Mon	Tue	Wed	Thu	Fri	Sat	Sun	Mon	Tue	Wed	Thu	Fri	Sat	Sun	Mon	Tue	Wed	Thu	Fri	Sat	Sun	Mon	Tue	Wed	Thu	Fri	Sat	Sun	
<b>M Manchester</b>	<b>64</b>	<b>60</b>	<b>66</b>	<b>51</b>	<b>49</b>	<b>57</b>	<b>71</b>	<b>56</b>	<b>52</b>	<b>49</b>	<b>54</b>	<b>47</b>	<b>54</b>	<b>72</b>	<b>58</b>	<b>47</b>	<b>47</b>	<b>46</b>	<b>52</b>	<b>60</b>	<b>53</b>	<b>61</b>	<b>69</b>	<b>53</b>	<b>67</b>	<b>51</b>	<b>57</b>	<b>70</b>	
M6 Claremont, Irlams O' Th' Height, Charlestown	1	1	2	1	3	1	1	3	2	2	1	0	2	1	1	0	1	1	0	0	0	1	2	0	2	0	1	1	
M8 Crumpsall, Cheetham Hill	2	1	0	1	1	0	0	1	0	0	0	0	1	0	0	0	0	0	0	1	0	0	0	0	1	0	0	0	
M13 Ardwick, Longsight, Chorlton-on-Medlock	0	2	0	0	0	1	1	0	0	0	0	0	0	0	0	1	1	0	0	0	0	0	0	0	0	1	1	1	
M14 Fallowfield, Moss Side, Ladybarn, Rusholme	0	0	0	0	0	1	0	1	0	1	0	0	0	0	0	0	0	0	0	0	0	0	1	0	1	0	0	0	
M16 Firwood, Old Trafford, Whalley Range	0	0	0	0	0	0	0	0	0	0	1	0	0	0	0	0	0	0	1	1	1	0	0	2	0	0	1	0	
M19 Levenshulme, Burnage	0	1	1	0	0	1	1	0	0	0	0	0	0	0	0	4	0	0	0	0	0	0	1	0	3	0	0	2	
M20 Didsbury, Withington	9	6	8	6	3	3	6	1	4	4	7	2	3	3	4	2	3	5	5	4	7	5	12	3	4	7	2	4	
M21 Chorlton-cum-Hardy, Barlow Moor	4	2	1	4	2	2	2	6	5	0	0	6	5	4	2	4	1	0	1	2	0	3	1	3	2	2	4	3	
M22 Wythenshawe, Northenden, Sharston Industrial Are	14	15	19	11	14	9	21	19	13	9	10	14	13	26	13	13	14	17	15	15	17	20	20	15	17	10	19	15	
M23 Baguley, Roundthorn Industrial Estate	13	12	12	9	9	14	10	5	10	9	11	5	5	6	7	5	6	8	9	8	7	9	5	10	14	9	9	12	
M31 Carrington, Partington	0	0	2	1	2	2	0	2	2	1	2	2	0	4	4	0	3	3	1	3	1	1	5	2	5	1	0	2	
M32 Stretford	1	1	1	0	2	3	1	1	2	1	2	2	2	2	4	4	2	0	2	0	2	1	0	0	0	1	1	1	
M33 Sale, Brooklands	12	14	14	12	9	14	18	11	9	15	12	10	16	14	14	10	9	7	14	18	10	17	14	11	13	13	13	18	
M41 Urmston, Davyhulme, Barton Dock Road	6	2	5	5	1	2	5	4	4	3	7	3	2	7	5	3	2	1	2	7	4	4	4	2	1	3	4	2	
M90 Manchester Airport	2	1	0	1	1	4	4	1	1	4	0	3	5	4	2	1	4	4	0	1	1	0	4	4	4	2	1	7	
M34 Denton, Audenshaw	0	1	0	0	1	0	1	0	0	0	0	0	0	0	0	1	0	0	0	1	0	0	0	0	0	0	0	0	
M28 Worsley, Walkden, Boothstown, Mosley Common, V	0	0	1	0	0	0	0	0	0	0	0	0	0	0	0	0	0	0	0	0	0	0	0	0	0	0	0	0	
M30 Eccles	0	1	0	0	0	0	0	0	0	0	0	0	0	0	0	0	0	0	0	0	0	0	0	0	0	0	0	0	
M35 Failsworth, Woodhouses	0	0	0	0	1	0	0	0	0	0	0	0	0	0	0	0	0	0	0	0	0	0	0	0	1	0	0	0	
M5 Ordsall, Seedley, Weaste, University, Pendleton	0	0	0	0	0	0	0	1	0	0	0	0	0	0	0	0	0	0	0	0	0	0	0	0	0	0	0	0	
M15 Hulme, Manchester Science Park	0	0	0	0	0	0	0	0	0	0	1	0	0	0	0	0	0	0	0	0	0	0	0	0	0	0	0	0	
M44 Irlam, Cadishead	0	0	0	0	0	0	0	0	0	0	0	0	0	1	0	0	0	0	0	0	0	0	0	0	0	0	0	0	
M7 Higher Broughton, Cheetwood, Lower Broughton, Ker	0	0	0	0	0	0	0	0	0	0	0	0	0	0	0	0	0	0	0	0	0	1	0	0	0	0	0	0	
M12 Ardwick, Longsight, Chorlton-on-Medlock	0	0	0	0	0	0	0	0	0	0	0	0	0	0	0	0	0	0	0	0	1	0	0	0	0	0	0	0	
M24 Middleton, Alkrington	0	0	0	0	0	0	0	0	0	0	0	0	0	0	1	0	0	0	0	0	0	0	0	0	0	0	0	0	
M27 Swinton, Clifton, Pendlebury, Wardley, Agecroft[dis	0	0	0	0	0	0	0	0	0	0	0	0	0	0	1	0	0	0	0	0	0	0	0	0	0	0	0	0	
M29 Tyldesley, Astley	0	0	0	0	0	0	0	0	0	0	0	0	0	0	0	0	0	0	1	1	0	0	0	0	0	0	0	0	
M1 Piccadilly, City Centre, Market Street	0	0	0	0	0	0	0	0	0	0	0	0	0	0	0	0	0	0	0	0	0	0	0	0	0	0	0	1	
M17 Trafford Park, The Trafford Centre	0	0	0	0	0	0	0	0	0	0	0	0	0	0	0	0	0	0	0	0	0	0	0	0	0	0	0	1	0
M40 Collyhurst, Miles Platting, Moston, New Moston, Ne	0	0	0	0	0	0	0	0	0	0	0	0	0	0	0	0	0	0	0	0	0	0	0	0	0	0	0	1	
M43 Droylsden	0	0	0	0	0	0	0	0	0	0	0	0	0	0	0	0	0	0	0	0	0	0	0	0	0	0	2	0	0
<b>WA Warrington</b>	<b>14</b>	<b>13</b>	<b>14</b>	<b>18</b>	<b>14</b>	<b>9</b>	<b>18</b>	<b>17</b>	<b>18</b>	<b>13</b>	<b>16</b>	<b>6</b>	<b>18</b>	<b>12</b>	<b>16</b>	<b>15</b>	<b>16</b>	<b>25</b>	<b>11</b>	<b>13</b>	<b>18</b>	<b>17</b>	<b>17</b>	<b>16</b>	<b>15</b>	<b>19</b>	<b>15</b>	<b>19</b>	
WA14 Altrincham, Bowdon, Broadheath, Dunham Town,	9	8	6	5	5	3	10	7	3	5	9	3	6	4	5	4	8	12	3	5	8	8	13	8	2	6	6	10	
WA15 Altrincham, Ashley, Hale, Hale Barns, Timperley, R	5	4	8	12	7	4	6	8	13	6	5	2	11	6	10	8	7	10	8	7	9	8	3	5	11	12	7	7	
WA16 Knutsford	0	1	0	1	2	2	1	2	2	1	1	1	1	1	1	3	1	2	0	0	0	0	1	2	0	0	2	2	
WA13 Lymm, Statham, Warburton	0	0	0	0	0	0	0	0	0	1	1	0	0	1	0	0	0	1	0	0	0	1	0	0	2	0	0	0	
WA8 Widnes, Cronton	0	0	0	0	0	0	1	0	0	0	0	0	0	0	0	0	0	0	0	0	0	0	0	0	0	0	0	0	
WA4 Warrington, Latchford, Stockton Heath, Appleton, G	0	0	0	0	0	0	0	0	0	0	0	0	0	0	0	0	0	0	0	1	0	0	0	1	0	0	0	0	
WA6 Frodsham, Helsby	0	0	0	0	0	0	0	0	0	0	0	0	0	0	0	0	0	0	0	0	1	0	0	0	0	0	0	0	
WA1 Warrington, Town Centre, Woolston, Paddington, B	0	0	0	0	0	0	0	0	0	0	0	0	0	0	0	0	0	0	0	0	0	0	0	0	0	0	1	0	0
<b>SK Stockport</b>	<b>16</b>	<b>14</b>	<b>13</b>	<b>13</b>	<b>16</b>	<b>13</b>	<b>13</b>	<b>11</b>	<b>13</b>	<b>11</b>	<b>12</b>	<b>13</b>	<b>14</b>	<b>16</b>	<b>18</b>	<b>15</b>	<b>20</b>	<b>13</b>	<b>16</b>	<b>10</b>	<b>14</b>	<b>13</b>	<b>10</b>	<b>16</b>	<b>9</b>	<b>21</b>	<b>16</b>	<b>8</b>	
<b>BL Bolton</b>	<b>2</b>	<b>2</b>	<b>0</b>	<b>1</b>	<b>1</b>	<b>2</b>	<b>0</b>	<b>1</b>	<b>0</b>	<b>0</b>	<b>1</b>	<b>1</b>	<b>0</b>	<b>0</b>	<b>1</b>	<b>0</b>	<b>2</b>	<b>0</b>	<b>1</b>	<b>0</b>	<b>0</b>	<b>2</b>	<b>1</b>	<b>4</b>	<b>0</b>	<b>0</b>	<b>2</b>	<b>1</b>	
<b>CW Crewe</b>	<b>0</b>	<b>0</b>	<b>0</b>	<b>0</b>	<b>0</b>	<b>0</b>	<b>0</b>	<b>0</b>	<b>1</b>	<b>0</b>	<b>0</b>	<b>0</b>	<b>0</b>	<b>1</b>	<b>0</b>	<b>0</b>	<b>0</b>	<b>0</b>	<b>0</b>	<b>0</b>	<b>0</b>	<b>0</b>	<b>0</b>	<b>0</b>	<b>1</b>	<b>0</b>	<b>0</b>	<b>0</b>	
<b>OL Oldham</b>	<b>1</b>	<b>2</b>	<b>2</b>	<b>3</b>	<b>2</b>	<b>0</b>	<b>4</b>	<b>2</b>	<b>3</b>	<b>1</b>	<b>1</b>	<b>3</b>	<b>2</b>	<b>1</b>	<b>3</b>	<b>1</b>	<b>1</b>	<b>3</b>	<b>2</b>	<b>0</b>	<b>2</b>	<b>0</b>	<b>2</b>	<b>0</b>	<b>1</b>	<b>5</b>	<b>3</b>	<b>0</b>	
<b>WN Wigan</b>	<b>0</b>	<b>0</b>	<b>2</b>	<b>1</b>	<b>0</b>	<b>0</b>	<b>0</b>	<b>0</b>	<b>0</b>	<b>0</b>	<b>0</b>	<b>0</b>	<b>0</b>	<b>1</b>	<b>0</b>	<b>0</b>	<b>0</b>	<b>0</b>	<b>1</b>	<b>0</b>	<b>0</b>	<b>0</b>	<b>0</b>	<b>0</b>	<b>0</b>	<b>0</b>	<b>0</b>	<b>0</b>	
<b>PR Preston</b>	<b>0</b>	<b>0</b>	<b>1</b>	<b>0</b>	<b>0</b>	<b>0</b>	<b>0</b>	<b>0</b>	<b>0</b>	<b>0</b>	<b>0</b>	<b>0</b>	<b>0</b>	<b>0</b>	<b>0</b>	<b>0</b>	<b>0</b>	<b>0</b>	<b>0</b>	<b>0</b>	<b>0</b>	<b>0</b>	<b>0</b>	<b>1</b>	<b>0</b>	<b>0</b>	<b>0</b>	<b>0</b>	
<b>FY Blackpool</b>	<b>0</b>	<b>0</b>	<b>0</b>	<b>0</b>	<b>0</b>	<b>1</b>	<b>0</b>	<b>0</b>	<b>0</b>	<b>0</b>	<b>0</b>	<b>0</b>	<b>0</b>	<b>0</b>	<b>0</b>	<b>0</b>	<b>0</b>	<b>0</b>	<b>0</b>	<b>0</b>	<b>0</b>	<b>0</b>	<b>0</b>	<b>0</b>	<b>0</b>	<b>0</b>	<b>0</b>	<b>0</b>	
<b>L Liverpool</b>	<b>0</b>	<b>0</b>	<b>0</b>	<b>0</b>	<b>0</b>	<b>0</b>	<b>0</b>	<b>0</b>	<b>0</b>	<b>0</b>	<b>0</b>	<b>0</b>	<b>0</b>	<b>0</b>	<b>0</b>	<b>0</b>	<b>0</b>	<b>0</b>	<b>1</b>	<b>0</b>	<b>0</b>	<b>0</b>	<b>0</b>	<b>0</b>	<b>0</b>	<b>0</b>	<b>0</b>	<b>0</b>	
<b>Grand Total</b>	<b>97</b>	<b>91</b>	<b>98</b>	<b>87</b>	<b>82</b>	<b>82</b>	<b>106</b>	<b>87</b>	<b>87</b>	<b>74</b>	<b>84</b>	<b>70</b>	<b>88</b>	<b>103</b>	<b>96</b>	<b>78</b>	<b>86</b>	<b>87</b>	<b>84</b>	<b>83</b>	<b>87</b>	<b>93</b>	<b>99</b>	<b>90</b>	<b>93</b>	<b>96</b>	<b>93</b>	<b>98</b>	

Clinic Type  
Hospitals by Area

A&E  
Manches

Source: NWSAS CAD  
Provisional pending  
QA

# Manchester Royal Infirmary

Daily Attendances .  
Day of month  
Day of week

AE Hospital Attends

Lum Labels  
2014/15  
February 14/15

March 14/15

Patient Pickup Location	9	10	11	12	13	14	15	16	17	18	19	20	21	22	23	24	25	26	27	28	1	2	3	4	5	6	7	8		
	Mon	Tue	Wed	Thu	Fri	Sat	Sun	Mon	Tue	Wed	Thu	Fri	Sat	Sun	Mon	Tue	Wed	Thu	Fri	Sat	Sun	Mon	Tue	Wed	Thu	Fri	Sat	Sun		
<b>M Manchester</b>	<b>85</b>	<b>86</b>	<b>86</b>	<b>90</b>	<b>77</b>	<b>82</b>	<b>106</b>	<b>95</b>	<b>104</b>	<b>86</b>	<b>87</b>	<b>98</b>	<b>93</b>	<b>66</b>	<b>99</b>	<b>89</b>	<b>77</b>	<b>106</b>	<b>108</b>	<b>100</b>	<b>102</b>	<b>77</b>	<b>102</b>	<b>70</b>	<b>91</b>	<b>94</b>	<b>118</b>	<b>110</b>		
M1 Piccadilly, City Centre, Market Street	7	8	6	8	5	11	16	11	9	1	6	6	11	9	0	6	7	11	16	11	13	7	6	8	5	8	24	14		
M2 Deansgate, City Centre	0	3	0	2	0	3	1	1	0	3	1	2	3	1	2	0	1	2	1	2	4	0	1	2	2	2	3	1		
M3 City Centre, Deansgate, Castlefield, Blackfriars, Trinity	2	1	5	1	2	1	2	2	3	1	1	4	2	2	2	3	2	3	2	5	4	0	3	1	0	2	4	4		
M4 Ancoats, Northern Quarter, Strangeways	3	6	2	7	1	4	6	5	2	3	9	3	1	3	1	7	6	2	6	6	5	1	4	4	3	2	8	7		
M6 Claremont, Irlams O' Th' Height, Charlestown	0	1	0	1	0	0	1	3	2	3	0	2	0	1	1	0	2	1	1	1	0	0	2	0	3	4	0	3		
M8 Crumpsall, Cheetham Hill	2	0	0	0	0	0	0	1	0	0	3	2	3	2	0	1	1	0	1	0	1	1	2	0	1	1	1	0		
M11 Clayton, Openshaw, Beswick	6	5	9	4	4	4	12	2	7	5	2	4	6	2	8	6	4	6	7	2	5	10	6	4	7	5	3	7		
M12 Ardwick, Longsight, Chorlton-on-Medlock	9	3	5	3	4	3	4	5	8	5	5	4	9	4	5	4	4	7	8	5	7	6	1	5	6	9	7			
M13 Ardwick, Longsight, Chorlton-on-Medlock	9	6	2	4	5	6	4	7	6	5	7	9	6	4	6	8	2	16	5	10	7	5	7	6	8	9	5	10		
M14 Fallowfield, Moss Side, Ladybarn, Rusholme	12	14	16	8	10	4	11	18	14	12	10	16	10	3	17	7	9	16	11	16	14	15	17	6	13	12	11	9		
M15 Hulme, Manchester Science Park	5	3	5	2	2	5	4	3	4	2	3	7	2	2	4	6	6	4	10	5	2	6	5	2	2	5	10	5		
M16 Firswood, Old Trafford, Whalley Range	1	1	10	12	9	8	10	6	13	12	5	8	5	6	7	6	4	5	7	3	6	7	6	9	3	6	5	5		
M18 Abbey Hey, Gorton	5	8	8	8	9	6	3	7	9	16	10	9	7	6	11	8	6	1	7	9	7	6	8	3	11	8	7	7		
M19 Levenshulme, Burnage	9	5	5	4	8	11	7	11	12	4	9	6	8	5	5	2	6	10	8	7	6	3	10	4	8	3	8	10		
M20 Didsbury, Withington	1	6	4	9	6	7	7	3	3	6	2	4	5	5	8	7	6	9	1	5	5	3	6	5	3	9	2	9		
M21 Chorlton-cum-Hardy, Barlow Moor	2	5	1	1	1	3	5	1	2	0	1	0	1	2	4	6	2	2	1	5	2	1	2	2	3	2	4	4		
M23 Baguley, Roundthorn Industrial Estate	0	0	0	1	0	0	0	0	0	1	0	0	1	0	1	1	1	0	0	0	0	0	1	0	0	0	0	0	0	
M32 Stretford	4	5	2	4	2	1	1	1	2	3	2	2	4	4	2	2	4	4	0	2	3	2	4	5	1	2	1	2		
M34 Denton, Audenshaw	1	0	0	2	1	0	1	0	0	0	1	2	1	1	0	0	0	1	3	0	1	0	0	0	1	3	0	1		
M40 Collyhurst, Miles Platting, Moston, New Moston, Newton Heath	0	0	3	1	2	0	4	2	1	0	0	1	1	2	3	2	1	0	2	1	6	0	1	1	4	0	1	0		
M41 Urmston, Davyhulme, Barton Dock Road	4	2	0	4	2	1	4	3	3	2	4	1	1	0	5	3	2	1	4	1	3	1	0	3	3	2	8	0		
M43 Droylsden	0	1	2	2	0	3	2	1	0	0	2	2	1	2	2	0	1	1	3	0	1	1	2	2	2	1	2	0		
M60 Large user and PO Box (located geographically in M1)	2	0	0	1	1	1	0	1	0	1	1	1	0	3	1	0	5	3	1	0	0	1	2	1	0	1	0	2		
M5 Ordsall, Seedley, Weaste, University, Pendleton	0	0	0	0	0	0	0	1	0	0	0	0	0	0	0	0	0	0	0	0	0	1	0	0	0	0	0	0		
M9 Harpurhey, Blackley	0	0	0	1	0	0	0	0	0	0	2	2	0	0	1	2	0	0	0	0	0	0	0	0	0	0	0	1		
M17 Trafford Park, The Trafford Centre	0	1	0	0	1	0	0	0	0	1	0	0	1	0	0	0	0	0	0	0	0	0	0	0	0	0	0	1		
M35 Failssworth, Woodhouses	0	0	0	0	0	0	0	0	0	0	0	1	0	0	0	0	0	1	0	0	0	0	0	0	0	0	0	0		
M31 Carrington, Partington	0	0	0	0	1	0	0	0	0	0	0	0	0	0	0	0	0	0	0	0	0	0	0	0	0	0	0	0		
M30 Eccles	0	0	0	0	0	0	0	0	0	0	0	0	0	0	0	0	0	0	0	1	0	1	0	1	1	0	0	0		
M33 Sale, Brooklands	0	1	0	0	0	0	0	0	0	1	0	0	0	0	1	0	0	0	0	0	0	0	0	0	0	0	0	0		
M7 Higher Broughton, Cheetwood, Lower Broughton, Kersal	0	1	0	0	0	0	0	0	0	0	1	0	1	0	0	1	0	1	1	0	1	0	0	0	0	0	0	0		
M25 Prestwich, Sedgeley Park, Simister	0	0	0	0	0	0	0	0	0	0	0	0	1	0	0	0	0	0	0	0	0	0	0	0	0	0	1	0	1	
M50 Salford Quays, MediaCityUK	0	0	0	0	0	0	0	0	0	0	0	0	1	0	0	0	0	0	0	0	0	0	0	0	0	0	0	0		
M28 Worsley, Walkden, Boothstown, Mosley Common, Wardley Industrial Estal	0	0	0	0	1	0	0	0	0	0	0	0	0	0	0	0	0	0	0	0	0	0	0	0	0	0	0	0		
M29 Tyldesley, Astley	0	0	1	0	0	0	0	0	0	0	0	0	0	0	0	0	0	0	0	0	0	0	0	0	0	0	0	0		
M44 Irlam, Cadishead	0	0	0	0	0	0	1	0	1	0	0	0	0	0	0	0	0	0	0	0	0	0	0	0	0	0	0	0		
M45 Whitefield	1	0	0	0	0	0	0	0	0	0	0	0	0	0	0	0	0	0	0	0	0	0	0	0	0	0	0	0		
M27 Swinton, Clifton, Pendlebury, Wardley, Agecroft[disambiguation needed]	0	0	0	0	0	0	0	0	1	0	0	0	0	0	0	0	0	0	1	0	0	0	1	0	0	0	0	0		
M22 Wythenshawe, Northenden, Sharston Industrial Area	0	0	0	0	0	0	0	0	0	0	0	0	0	0	0	0	0	0	0	0	0	0	0	0	0	0	1	0		
M38 Little Hulton	0	0	0	0	0	0	0	0	0	0	0	0	0	0	0	0	0	0	0	0	0	0	0	0	1	0	0	0		
<b>BL Bolton</b>	<b>2</b>	<b>0</b>	<b>1</b>	<b>4</b>	<b>2</b>	<b>0</b>	<b>1</b>	<b>4</b>	<b>0</b>	<b>0</b>	<b>2</b>	<b>2</b>	<b>0</b>	<b>2</b>	<b>2</b>	<b>1</b>	<b>2</b>	<b>2</b>	<b>1</b>	<b>2</b>	<b>1</b>	<b>1</b>	<b>2</b>	<b>2</b>	<b>2</b>	<b>0</b>	<b>6</b>	<b>1</b>	<b>2</b>	
<b>OL Oldham</b>	<b>0</b>	<b>0</b>	<b>2</b>	<b>2</b>	<b>6</b>	<b>1</b>	<b>0</b>	<b>0</b>	<b>1</b>	<b>1</b>	<b>5</b>	<b>4</b>	<b>0</b>	<b>2</b>	<b>2</b>	<b>1</b>	<b>2</b>	<b>2</b>	<b>1</b>	<b>1</b>	<b>2</b>	<b>2</b>	<b>2</b>	<b>2</b>	<b>0</b>	<b>6</b>	<b>1</b>	<b>2</b>		
<b>SK Stockport</b>	<b>3</b>	<b>7</b>	<b>6</b>	<b>2</b>	<b>3</b>	<b>2</b>	<b>2</b>	<b>5</b>	<b>2</b>	<b>2</b>	<b>1</b>	<b>5</b>	<b>1</b>	<b>2</b>	<b>1</b>	<b>5</b>	<b>5</b>	<b>0</b>	<b>2</b>	<b>0</b>	<b>3</b>	<b>5</b>	<b>2</b>	<b>3</b>	<b>3</b>	<b>6</b>	<b>0</b>	<b>1</b>		
<b>WN Wigan</b>	<b>0</b>	<b>0</b>	<b>1</b>	<b>1</b>	<b>0</b>	<b>0</b>	<b>0</b>	<b>0</b>	<b>0</b>	<b>0</b>	<b>0</b>	<b>0</b>	<b>1</b>	<b>0</b>	<b>0</b>	<b>0</b>	<b>1</b>	<b>1</b>	<b>0</b>	<b>1</b>	<b>1</b>	<b>1</b>	<b>1</b>	<b>1</b>	<b>1</b>	<b>1</b>	<b>0</b>	<b>0</b>	<b>0</b>	
<b>WA Warrington</b>	<b>1</b>	<b>1</b>	<b>0</b>	<b>0</b>	<b>0</b>	<b>0</b>	<b>0</b>	<b>0</b>	<b>0</b>	<b>0</b>	<b>0</b>	<b>0</b>	<b>0</b>	<b>0</b>	<b>0</b>	<b>0</b>	<b>0</b>	<b>0</b>	<b>1</b>	<b>0</b>	<b>0</b>	<b>0</b>	<b>0</b>	<b>0</b>	<b>0</b>	<b>0</b>	<b>1</b>	<b>0</b>	<b>0</b>	
<b>BB Blackburn</b>	<b>0</b>	<b>0</b>	<b>1</b>	<b>0</b>	<b>0</b>	<b>0</b>	<b>0</b>	<b>1</b>	<b>0</b>	<b>0</b>	<b>0</b>	<b>1</b>	<b>0</b>	<b>1</b>	<b>0</b>	<b>0</b>	<b>0</b>	<b>0</b>	<b>0</b>	<b>0</b>	<b>0</b>	<b>0</b>	<b>0</b>	<b>0</b>	<b>0</b>	<b>0</b>	<b>0</b>	<b>0</b>	<b>0</b>	<b>0</b>
<b>LA Lancaster</b>	<b>0</b>	<b>0</b>	<b>0</b>	<b>1</b>	<b>0</b>	<b>1</b>	<b>0</b>	<b>0</b>	<b>0</b>	<b>0</b>	<b>0</b>	<b>0</b>	<b>0</b>	<b>0</b>	<b>0</b>	<b>0</b>	<b>0</b>	<b>0</b>	<b>0</b>	<b>0</b>	<b>0</b>	<b>0</b>	<b>0</b>	<b>0</b>	<b>0</b>	<b>0</b>	<b>0</b>	<b>0</b>	<b>0</b>	<b>0</b>
<b>CW Crewe</b>	<b>0</b>	<b>0</b>	<b>0</b>	<b>0</b>	<b>0</b>	<b>0</b>	<b>0</b>	<b>0</b>	<b>0</b>	<b>0</b>	<b>0</b>	<b>0</b>	<b>0</b>	<b>0</b>	<b>0</b>	<b>0</b>	<b>0</b>	<b>0</b>	<b>0</b>	<b>0</b>	<b>1</b>	<b>0</b>	<b>0</b>	<b>0</b>	<b>0</b>	<b>0</b>	<b>0</b>	<b>0</b>	<b>0</b>	<b>0</b>
<b>Grand Total</b>	<b>91</b>	<b>94</b>	<b>97</b>	<b>100</b>	<b>88</b>	<b>86</b>	<b>109</b>	<b>105</b>	<b>107</b>	<b>89</b>	<b>95</b>	<b>110</b>	<b>95</b>	<b>71</b>	<b>104</b>	<b>97</b>	<b>84</b>	<b>110</b>	<b>114</b>	<b>104</b>	<b>108</b>	<b>86</b>	<b>108</b>	<b>77</b>	<b>96</b>	<b>107</b>	<b>121</b>	<b>113</b>		

Clinic Type  
Hospitals by Area

A&E  
Salford R

Source: NWAS CAD  
Provisional pending QA

# Salford Royal

Daily Attendances .  
Day of month  
Day of week

AE Hospital Attends

Column Labels  
2014/15  
February 14/15

March 14/15

## Patient Pickup Location

	9	10	11	12	13	14	15	16	17	18	19	20	21	22	23	24	25	26	27	28	1	2	3	4	5	6	7	8
	Mon	Tue	Wed	Thu	Fri	Sat	Sun	Mon	Tue	Wed	Thu	Fri	Sat	Sun	Mon	Tue	Wed	Thu	Fri	Sat	Sun	Mon	Tue	Wed	Thu	Fri	Sat	Sun
<b>M Manchester</b>	<b>73</b>	<b>71</b>	<b>70</b>	<b>69</b>	<b>72</b>	<b>68</b>	<b>81</b>	<b>81</b>	<b>48</b>	<b>71</b>	<b>56</b>	<b>66</b>	<b>72</b>	<b>76</b>	<b>66</b>	<b>63</b>	<b>79</b>	<b>71</b>	<b>75</b>	<b>75</b>	<b>82</b>	<b>74</b>	<b>72</b>	<b>68</b>	<b>90</b>	<b>59</b>	<b>79</b>	<b>86</b>
M3 City Centre, Deansgate, Castlefield,Blackfriars, Trinity	1	0	0	1	2	2	0	0	2	1	5	1	0	3	2	1	0	3	0	0	2	4	1	0	2	1	1	0
M5 Ordsall, Seedley, Weaste, University, Pendleton	9	6	7	5	3	3	9	5	3	4	4	2	3	1	4	6	4	3	7	6	3	2	2	7	5	3	3	8
M6 Claremont, Irlams O' Th' Height, Charlestown	8	16	8	8	8	11	13	11	11	12	7	12	17	21	6	10	12	11	15	12	20	13	14	9	15	9	12	19
M7 Higher Broughton, Cheetwood, Lower Broughton, Kersal	6	7	5	4	10	6	4	5	0	8	5	6	4	4	9	8	11	7	5	3	4	7	9	5	2	6	5	5
M8 Crumpsall, Cheetham Hill	0	0	0	0	0	0	0	0	1	0	1	0	1	0	2	1	0	0	1	1	0	1	0	1	0	0	0	1
M9 Harpurhey, Blackley	0	0	1	0	0	0	0	0	0	0	0	0	0	2	0	0	3	0	0	0	0	0	0	0	2	0	0	0
M13 Ardwick, Longsight, Chorlton-on-Medlock	1	1	0	0	0	0	3	3	0	1	0	2	2	0	1	0	3	1	1	1	1	1	0	0	1	0	1	0
M16 Firwood, Old Trafford, Whalley Range	0	0	1	0	0	0	0	0	0	0	0	0	0	0	0	0	0	0	1	0	0	0	0	0	0	0	0	0
M17 Trafford Park, The Trafford Centre	0	1	2	0	1	1	1	1	1	4	1	1	2	3	1	1	0	0	0	0	1	1	0	0	1	1	1	3
M20 Didsbury, Withington	0	1	0	0	0	0	2	0	0	0	0	1	0	0	0	0	0	0	0	0	0	0	0	0	0	0	0	0
M23 Baguley, Roundthorn Industrial Estate	0	0	2	2	1	1	1	0	2	1	0	0	2	1	1	0	1	2	0	0	0	2	1	0	0	1	3	0
M25 Prestwich, Sedgely Park, Simister	0	0	1	2	1	2	1	0	0	0	2	0	0	0	0	2	2	0	1	0	0	2	0	1	0	0	2	0
M27 Swinton, Clifton, Pendlebury, Wardley, Agecroft[disambiguation needed]	17	7	9	11	10	12	11	11	5	11	6	6	18	13	9	11	7	12	12	11	13	10	15	8	14	8	7	9
M28 Worsley, Walkden, Boothstown, Mosley Common, Wardley Industrial Est	6	5	5	9	6	4	11	16	3	1	5	5	11	7	4	9	7	5	4	7	6	11	4	5	10	5	4	3
M29 Tyldesley, Astley	1	1	1	0	0	0	0	0	1	0	0	0	0	1	0	1	1	0	0	1	0	1	2	2	0	0	0	1
M30 Eccles	6	10	11	8	10	8	10	14	7	10	6	15	5	9	11	4	15	11	14	14	15	8	10	8	21	14	14	12
M32 Stretford	1	1	1	1	0	1	3	1	1	2	0	0	0	0	0	0	1	3	1	2	1	0	0	3	1	2	5	1
M38 Little Hulton	3	5	0	2	3	0	0	1	0	2	1	3	0	0	1	1	0	1	1	1	1	1	1	1	0	1	1	1
M40 Collyhurst, Miles Platting, Moston, New Moston, Newton Heath	0	0	0	0	1	1	0	0	0	0	0	0	0	0	0	1	2	0	2	0	2	0	0	0	0	0	1	0
M41 Urmston, Davyhulme, Barton Dock Road	3	3	4	10	5	3	4	6	4	6	4	7	3	4	10	1	4	4	3	3	8	2	1	9	5	2	5	12
M44 Irlam, Cadishead	6	3	8	4	7	9	5	4	6	5	7	3	1	5	4	3	3	4	6	9	6	8	6	5	7	2	8	7
M50 Salford Quays, MediaCityUK	2	2	1	2	1	2	2	1	1	0	0	0	0	0	0	1	2	2	1	0	0	1	2	1	0	0	0	1
M33 Sale, Brooklands	0	1	0	0	1	0	2	0	0	0	1	0	0	0	0	0	0	0	0	0	0	1	0	0	1	0	0	1
M1 Piccadilly, City Centre, Market Street	0	0	0	0	0	0	0	0	0	0	0	1	0	0	0	0	0	0	0	0	0	0	0	0	0	2	0	0
M26 Radcliffe, Stoneclough	0	0	1	0	0	0	0	0	0	1	0	0	0	0	0	1	0	0	0	0	0	0	0	0	2	0	0	0
M43 Droylsden	0	0	0	0	0	0	0	0	0	0	0	0	0	0	0	0	0	0	0	0	0	0	1	0	0	0	0	0
M14 Fallowfield, Moss Side, Ladybarn, Rusholme	0	0	0	0	0	0	0	0	0	0	0	1	0	0	0	0	0	0	0	0	0	0	0	2	0	1	0	0
M31 Carrington, Partington	0	1	0	0	0	0	0	0	0	0	1	0	0	0	0	0	0	0	0	1	0	0	0	1	0	0	0	1
M19 Levenshulme, Burnage	0	0	0	0	0	1	0	0	0	0	0	0	0	0	0	0	0	0	0	0	0	0	0	0	0	0	0	0
M24 Middleton, Alkrington	0	0	0	0	0	0	0	0	0	0	0	0	0	1	0	0	0	0	0	0	1	0	0	0	0	0	0	1
M22 Wythenshawe, Northenden, Sharston Industrial Area	0	0	0	0	0	0	0	0	0	1	0	0	0	0	0	1	0	0	0	0	0	0	0	0	0	0	0	2
M21 Chorlton-cum-Hardy, Barlow Moor	2	0	0	0	0	0	0	0	0	0	0	0	0	0	1	0	0	0	0	0	0	0	0	0	0	0	0	1
M18 Abbey Hey, Gorton	0	0	0	0	0	0	0	0	0	0	0	0	0	1	0	0	0	0	0	0	0	0	0	0	0	0	0	0
M34 Denton, Audenshaw	1	0	1	0	0	0	0	0	0	0	0	0	0	0	0	0	0	0	0	0	0	0	1	0	0	0	0	0
M46 Atherton	0	0	0	0	0	0	0	0	0	0	0	1	0	0	0	1	0	0	1	0	0	1	0	0	0	0	0	0
M2 Deansgate, City Centre	0	0	0	0	0	0	0	0	0	1	0	0	0	0	0	0	0	0	0	0	0	0	0	0	0	0	0	0
M35 Failsworth, Woodhouses	0	0	0	0	0	0	0	0	0	0	0	0	1	0	0	0	0	0	0	0	0	0	0	0	0	0	0	0
M4 Ancoats, Northern Quarter, Strangeways	0	0	0	0	0	1	0	0	0	0	0	0	0	0	0	1	0	0	0	0	0	0	1	0	0	0	0	0
M15 Hulme, Manchester Science Park	0	0	1	0	0	0	0	0	0	0	0	1	0	0	0	0	0	0	0	0	0	0	0	0	0	0	0	1
M45 Whitefield	0	0	0	0	1	0	1	0	0	0	0	0	0	0	0	0	0	0	0	0	0	0	0	0	0	0	0	0
M12 Ardwick, Longsight, Chorlton-on-Medlock	0	0	0	0	0	0	0	0	0	0	0	0	0	0	0	0	0	0	0	0	0	0	1	0	0	0	0	0
M60 Large user and PO Box (located geographically in M1)	0	0	0	0	0	0	0	0	0	0	0	0	0	0	0	0	0	0	0	0	0	0	0	0	0	0	0	1
<b>BL Bolton</b>	<b>4</b>	<b>3</b>	<b>2</b>	<b>4</b>	<b>3</b>	<b>2</b>	<b>1</b>	<b>2</b>	<b>2</b>	<b>0</b>	<b>1</b>	<b>4</b>	<b>1</b>	<b>1</b>	<b>2</b>	<b>7</b>	<b>1</b>	<b>2</b>	<b>3</b>	<b>2</b>	<b>1</b>	<b>2</b>	<b>5</b>	<b>3</b>	<b>3</b>	<b>3</b>	<b>2</b>	
<b>OL Oldham</b>	<b>1</b>	<b>1</b>	<b>2</b>	<b>1</b>	<b>1</b>	<b>2</b>	<b>4</b>	<b>4</b>	<b>3</b>	<b>1</b>	<b>2</b>	<b>4</b>	<b>4</b>	<b>2</b>	<b>1</b>	<b>1</b>	<b>1</b>	<b>2</b>	<b>1</b>	<b>0</b>	<b>2</b>	<b>2</b>	<b>1</b>	<b>1</b>	<b>1</b>	<b>1</b>	<b>5</b>	<b>3</b>
<b>SK Stockport</b>	<b>0</b>	<b>1</b>	<b>0</b>	<b>2</b>	<b>0</b>	<b>2</b>	<b>3</b>	<b>2</b>	<b>3</b>	<b>1</b>	<b>0</b>	<b>3</b>	<b>0</b>	<b>3</b>	<b>2</b>	<b>1</b>	<b>2</b>	<b>1</b>	<b>1</b>	<b>0</b>	<b>2</b>	<b>2</b>	<b>0</b>	<b>1</b>	<b>1</b>	<b>3</b>	<b>2</b>	<b>3</b>
<b>WA Warrington</b>	<b>0</b>	<b>0</b>	<b>1</b>	<b>2</b>	<b>1</b>	<b>1</b>	<b>0</b>	<b>2</b>	<b>1</b>	<b>0</b>	<b>0</b>	<b>0</b>	<b>0</b>	<b>0</b>	<b>1</b>	<b>0</b>	<b>0</b>	<b>0</b>	<b>0</b>	<b>0</b>	<b>0</b>	<b>1</b>	<b>1</b>	<b>0</b>	<b>1</b>	<b>1</b>	<b>1</b>	<b>0</b>
<b>WN Wigan</b>	<b>1</b>	<b>1</b>	<b>2</b>	<b>5</b>	<b>3</b>	<b>3</b>	<b>1</b>	<b>1</b>	<b>3</b>	<b>2</b>	<b>1</b>	<b>1</b>	<b>1</b>	<b>0</b>	<b>0</b>	<b>1</b>	<b>4</b>	<b>1</b>	<b>0</b>	<b>2</b>	<b>1</b>	<b>3</b>	<b>1</b>	<b>1</b>	<b>2</b>	<b>2</b>	<b>4</b>	<b>0</b>
<b>LA Lancaster</b>	<b>0</b>	<b>0</b>	<b>0</b>	<b>0</b>	<b>0</b>	<b>0</b>	<b>0</b>	<b>0</b>	<b>0</b>	<b>0</b>	<b>0</b>	<b>0</b>	<b>1</b>	<b>0</b>	<b>0</b>	<b>0</b>	<b>0</b>	<b>0</b>	<b>0</b>	<b>0</b>	<b>0</b>	<b>0</b>	<b>0</b>	<b>0</b>	<b>0</b>	<b>0</b>	<b>0</b>	<b>0</b>
<b>CW Crewe</b>	<b>0</b>	<b>0</b>	<b>0</b>	<b>0</b>	<b>0</b>	<b>0</b>	<b>0</b>	<b>0</b>	<b>0</b>	<b>0</b>	<b>0</b>	<b>1</b>	<b>0</b>	<b>0</b>	<b>0</b>	<b>1</b>	<b>0</b>	<b>0</b>	<b>1</b>	<b>0</b>	<b>0</b>	<b>1</b>	<b>0</b>	<b>0</b>	<b>0</b>	<b>0</b>	<b>0</b>	<b>0</b>
<b>BB Blackburn</b>	<b>0</b>	<b>0</b>	<b>0</b>	<b>0</b>	<b>0</b>	<b>0</b>	<b>0</b>	<b>0</b>	<b>0</b>	<b>0</b>	<b>0</b>	<b>1</b>	<b>0</b>	<b>0</b>	<b>0</b>	<b>0</b>	<b>0</b>	<b>0</b>	<b>0</b>	<b>0</b>	<b>0</b>	<b>0</b>	<b>0</b>	<b>0</b>	<b>0</b>	<b>0</b>	<b>0</b>	<b>0</b>
<b>Grand Total</b>	<b>79</b>	<b>77</b>	<b>77</b>	<b>83</b>	<b>80</b>	<b>78</b>	<b>90</b>	<b>92</b>	<b>60</b>	<b>75</b>	<b>60</b>	<b>80</b>	<b>79</b>	<b>82</b>	<b>71</b>	<b>74</b>	<b>88</b>	<b>77</b>	<b>80</b>	<b>80</b>	<b>88</b>	<b>84</b>	<b>80</b>	<b>74</b>	<b>98</b>	<b>69</b>	<b>94</b>	<b>94</b>

Clinic Type  
Hospitals by Area

All  
Trafford

Source: NWAS CAD  
Provisional pending  
QA

# Trafford General

Daily Attendances .  
Day of month  
Day of week

AE Hospital Attends

lumn Labels  
2014/15  
February 14/15

March 14/15

Patient Pickup Location	February 14/15							March 14/15																											
	9 Mon	10 Tue	11 Wed	12 Thu	13 Fri	14 Sat	15 Sun	16 Mon	17 Tue	18 Wed	19 Thu	20 Fri	21 Sat	22 Sun	23 Mon	24 Tue	25 Wed	26 Thu	27 Fri	28 Sat	1 Sun	2 Mon	3 Tue	4 Wed	5 Thu	6 Fri	7 Sat	8 Sun							
<b>M Manchester</b>	7	5	6	6	6	5	5	10	5	10	7	3	5	3	9	4	8	7	8	5	8	8	5	5	5	10	2	4							
M6 Claremont, Irlams O' Th' Height, Charlestown	2	2	0	0	1	1	0	2	0	2	0	0	1	0	1	0	0	0	1	0	1	0	0	1	0	0	0	1							
M31 Carrington, Partington	0	0	1	0	0	1	0	1	0	0	0	0	0	0	0	0	0	0	0	0	0	0	1	0	0	2	1	0	0						
M32 Stretford	1	0	1	2	2	1	0	0	2	3	2	1	0	2	1	0	2	2	3	1	1	2	1	1	2	4	0	0							
M33 Sale, Brooklands	0	0	0	1	1	0	1	0	0	2	0	1	0	0	1	1	1	1	1	1	1	0	1	1	0	0	0	2							
M41 Urmston, Davyhulme, Barton Dock Road	2	1	3	2	2	1	3	5	3	3	1	1	3	1	6	2	2	4	1	3	4	4	3	2	0	5	1	1							
M17 Trafford Park, The Trafford Centre	0	0	0	0	0	1	0	0	0	0	2	0	0	0	0	0	0	0	0	0	1	0	0	0	0	0	0	0							
M16 Firwood, Old Trafford, Whalley Range	0	1	0	1	0	0	0	1	0	0	1	0	0	0	0	1	1	0	0	0	0	0	0	0	0	0	0	0							
M44 Irlam, Cadishead	2	0	0	0	0	0	0	0	0	0	0	0	0	0	0	0	0	0	1	0	0	0	0	0	0	0	0	0							
M23 Baguley, Roundthorn Industrial Estate	0	0	1	0	0	0	1	0	0	0	1	0	0	0	0	0	1	0	0	0	0	0	0	0	1	0	0	0							
M15 Hulme, Manchester Science Park	0	1	0	0	0	0	0	0	0	0	0	0	0	0	0	0	0	0	0	0	0	0	0	0	0	0	0	0							
M5 Ordsall, Seedley, Weaste, University, Pendleton	0	0	0	0	0	0	0	0	0	0	0	0	1	0	0	0	0	0	0	0	0	0	0	0	0	0	0	0							
M7 Higher Broughton, Cheetwood, Lower Broughton, Kersal	0	0	0	0	0	0	0	1	0	0	0	0	0	0	0	0	0	0	0	0	0	0	0	0	0	0	0	0							
M21 Chorlton-cum-Hardy, Barlow Moor	0	0	0	0	0	0	0	0	0	0	0	0	0	0	0	1	0	0	0	0	1	0	0	0	0	0	0	0							
M30 Eccles	0	0	0	0	0	0	0	0	0	0	0	0	0	0	0	0	0	0	1	0	0	0	0	0	0	0	0	0							
M8 Crumpsall, Cheetham Hill	0	0	0	0	0	0	0	0	0	0	0	0	0	0	0	0	0	0	0	0	0	0	0	0	0	0	1	0							
<b>WA Warrington</b>	1	1	0	0	0	0	0	0	0	0	0	0	0	0	0	0	0	0	0	0	1	0	0	0	0	0	0	0							
<b>BL Bolton</b>	0	0	0	0	0	0	0	0	0	0	0	0	0	0	0	0	0	0	0	0	0	0	0	1	0	0	0	0							
<b>Grand Total</b>	8	6	6	6	6	5	5	10	5	10	7	3	5	3	9	4	8	7	8	5	9	8	5	5	6	10	2	4							